

# d-Color MF2552

This elegant system, designed and developed to effectively manage an office's entire **documentation flow**, expertly integrates all the functions needed by **modern work groups**.



**DIGITAL MULTIFUNCTIONAL SYSTEM**

---

**PRINTING SPEED UP TO 25 ppm (A4) IN MONO AND COLOUR**

---

**SCANNING SPEED UP TO 48 ppm (A4) IN MONO AND COLOUR**

---

**MEMORY: 2 GB RAM + 160 GB HDD**

---

**DOCUMENT FEEDER, JOB SEPARATOR AND DUPLEX AS STANDARD**

---

**8.5" COLOUR TOUCH SCREEN CONTROL PANEL**

---

**PAPER CAPACITY 1,100 SHEETS (STANDARD) UP TO 2,100  
(WITH OPTIONAL TRAYS)**

---

**FIRST COLOUR COPY TIME: MAX 9.9 SECONDS**

---

**INTERNAL WEB BROWSER AS STANDARD**

---

## d-COLOR MF2552

### VERSATILITY

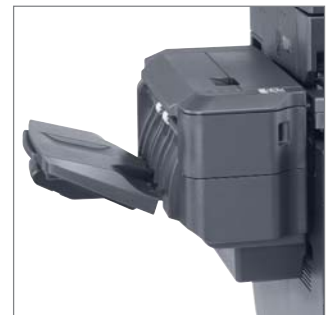
The new d-Color MF2552, equipped with a reliable tandem engine, prints at up to 25 pages per minute in A4 (colour and mono), and, thanks to a powerful network scanner, can scan up to **48 pages per minute**.

All the machine functions are accessible through a responsive and intuitive 8.5 inch colour control panel, through which the user can set, for example: duplex printing, different scanning options (e.g. **scan-to-server**, scan-to-email, scan-to-folder, **scan-to-USB**) and all finishing functions (available through the optional finisher) enabling users to collate and staple documents.

The new multifunctional system is also equipped with an **internal web browser** that grants remote access to websites or servers in order to expedite the printing of documents available on the Internet/Intranet. The same network integration and the ability to manage **PDF/A (1a and 1b)** and Encrypted PDFs means that the new d-Color MF2552 can be used as a document management enabler system.



Capacitive 8.5" control panel



Optional finisher staple  
(500 sheets)



## MAXIMISING PRODUCTIVITY

The d-Color MF2552 also features many advanced functions for maximising productivity, without compromising its simplicity - functions, therefore, that users will appreciate in their day to day use.

For example, the **JOB SKIP** function solves the problem of jobs stalling in the print queue (for example, the job requires paper that is not currently loaded in the machine), and allowing subsequent jobs to carry on printing.

In addition, printing in mono is also possible when the colour toner has run out (up to 500 pages).

## COLOUR PROFILES

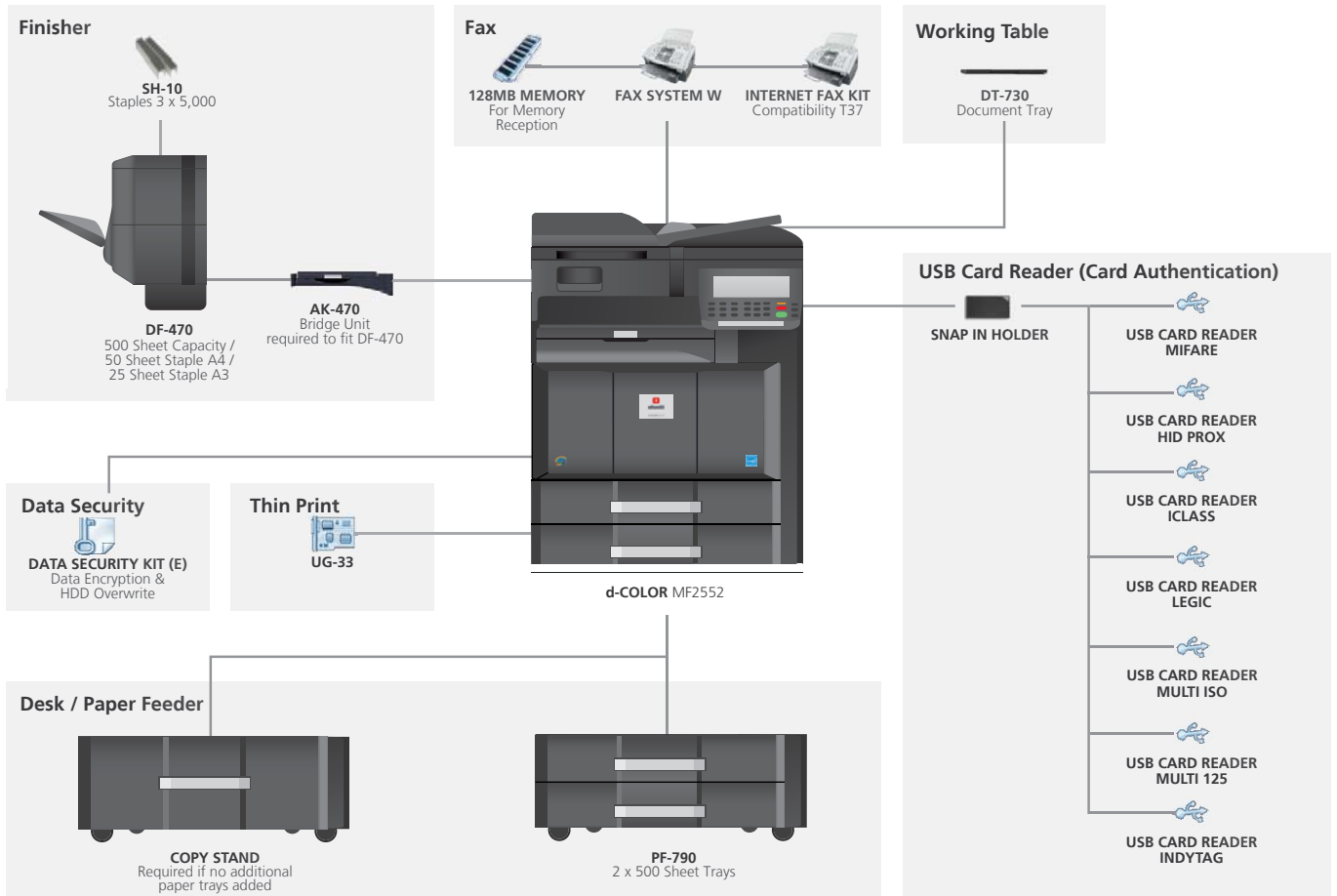
Given that any judgement of output quality involves subjective as well as objective considerations, the d-Color MF2552 comes as standard with 6 colour profiles, which can be set during the installation phase, with the purpose of obtaining the desired printing effect.

## MEDIA FLEXIBILITY

The d-Color MF2552 comes as standard with a 50 sheet Document Feeder, automatic Duplex and a Job Separator. All paper trays (standard and optional) support up to 256g/m<sup>2</sup> paper, with the Duplex supporting up to 220g/m<sup>2</sup>. The optional 500 sheet Finisher offers stapling for up to 50 sheets in A4 format and 25 sheets in A3 format.



## OPTIONS



# TECHNICAL SPECIFICATIONS

## GENERAL INFORMATION

<b>Type</b>	A3 colour multifunctional system
<b>Technology</b>	Colour laser
<b>Engine Speed</b>	Up to 25/13 ppm A4/A3, colour and mono
<b>Print Resolution</b>	600 x 600 dpi, multi-bit technology for print quality equivalent to 9,600 dpi x 600 dpi
<b>Warm-up Time</b>	< 45 seconds
<b>First Copy Time</b>	Mono: < 7.9 seconds Colour: < 9.9 seconds
<b>Dimensions (WxDxH)</b>	594 x 699 x 862 mm
<b>Weight</b>	Main unit + standard document feeder approximately 95.5 kg
<b>Power Consumption</b>	Print mode: 651 W (for colour and mono); Stand-by mode: 145 W; Sleep mode: 16 W
<b>Power</b>	AC 220 V – 240 V, 50/60 Hz
<b>Noise (ISO7779)</b>	Print mode: 68.5 dB(A) in colour, 67.75 dB(A) in mono; Stand-by mode: 49 dB (A)
<b>Memory</b>	2GB RAM + 160 GB HDD

## PAPER MANAGEMENT

<b>Paper Trays and By-pass, Formats and Weight</b>	MPT: 100 sheets A4 / 25-sheets A3 60-256 g/m <sup>2</sup> , A6R–A3; Trays: 2 x 500 sheets, 60-256 g/m <sup>2</sup> , A5R–A3
<b>Maximum Paper Feed Capacity (with options)</b>	2,100 A4 sheets (with additional trays)
<b>Duplex Unit (Standard)</b>	Duplex function: supports A5-A3, 60-220 g/m <sup>2</sup>
<b>Output Tray Capacity (Standard)</b>	Max. 280 sheets (250 sheets / 30 job separator sheets)
<b>Document Feeder (Standard)</b>	Automatic duplex document feeder: 50 sheets, 45-160 g/m <sup>2</sup> , A5R-A3

## PRINTER

<b>Processor</b>	IBM PowerPC 750CL/600 MHz
<b>Emulations</b>	PCL6 (PCL5c / PCL-XL), KPDL3 (PostScript 3 compatible), PDF Direct Print, XPS Direct Print
<b>Fonts</b>	93 outline fonts (PCL6), 8 fonts (Windows Vista), 136 fonts (KPDL3), 45 types of one-dimensional barcodes plus two-dimensional barcode (PDF417)
<b>Functions</b>	Encrypted PDF Direct Print, IPP printing, e-mail printing, WSD printing, secure printing via SSL, IPsec, SNMPv3, fast printing, proof and hold, private printing, storage and job management
<b>Operating Systems Supported</b>	All current Windows operating systems, Mac OS X version 10.4 or higher, Unix, Linux and other operating systems on request

## SCANNER

<b>File Type</b>	High compression PDF, encrypted PDF, PDF/A-(1a & 1b), JPEG, TIFF, XPS
<b>Document Recognition</b>	Photo, Text + Photo, Text
<b>Max. Scanning Format</b>	A3
<b>Functions</b>	Scan-to-email, Scan-to-FTP, Scan-to-SMB, Scan-to- USB Host, Scan-to-box
<b>Scanning Resolution</b>	600 dpi, 400 dpi, 300 dpi, 200 dpi, 200 x 100 dpi, 200 x 400 dpi (256 greyscales)
<b>Scanning Speed</b>	48 ipm (A4, 300 dpi, simplex), mono and colour

## COPIER

<b>Copying Resolution</b>	600 x 600 dpi
<b>Maximum Original Format</b>	A3
<b>Digital Copying</b>	Scan-once-print-many, electronic sort, 2in1 and 4in1 function, image repeat, page numbering, cover mode, booklet, interrupt copy, form overlay, stamp function
<b>Exposure Modes</b>	Automatic / Manual: 7 / 13 levels
<b>Zoom</b>	25 - 400% (1% steps)
<b>Continuous Copying</b>	1 - 999
<b>Image Adjustments</b>	Text + Photo, Text, Photo, Map

## FAX FUNCTION

<b>Compatibility</b>	ITU-T Super G3
<b>Modem Speed</b>	Max. 33.6 kbps
<b>Transmission speed</b>	Less than 3 seconds (JBIG)
<b>Scan Density</b>	Normal: 200 x 100 dpi Fine: 200 x 200 dpi Superfine: 200 x 400 dpi Ultrafine: 400 x 400 dpi, 600 x 600 dpi
<b>Maximum Original Format</b>	A3
<b>Compression Method</b>	JBIG, MMR, MR, MH
<b>Memory Reception</b>	Standard 700 sheets, Option: 7,000 sheets
<b>Fax Functions</b>	Optional internet-fax, network faxing, rotate transmission, rotate printing, duplex fax, receive in memory. Dual-line Fax via second Fax Card

## INTERFACES

<b>Standard Interface</b>	USB 2.0 (Hi-Speed), USB Host 2.0, Fast Ethernet 10BaseT/100BaseTX/1000BaseT, slot for optional print server, slot for optional CompactFlash® card, slot for optional Fax System
---------------------------	--

Product performances are referred to as appropriate use under optimal conditions. The registered trademarks are the property of their respective owners.

The support and availability of the listed specifications and functionalities varies depending upon operating systems, applications, network protocols as well as network and system configurations. All information relating to specification and accessories is subject to change without notice. Olivetti does not guarantee that any prices or specifications mentioned will be error-free

OLIVETTI UK LIMITED.  
500 AVEBURY BOULEVARD  
MILTON KEYNES, MK9 2BE  
www.olivetti.co.uk

