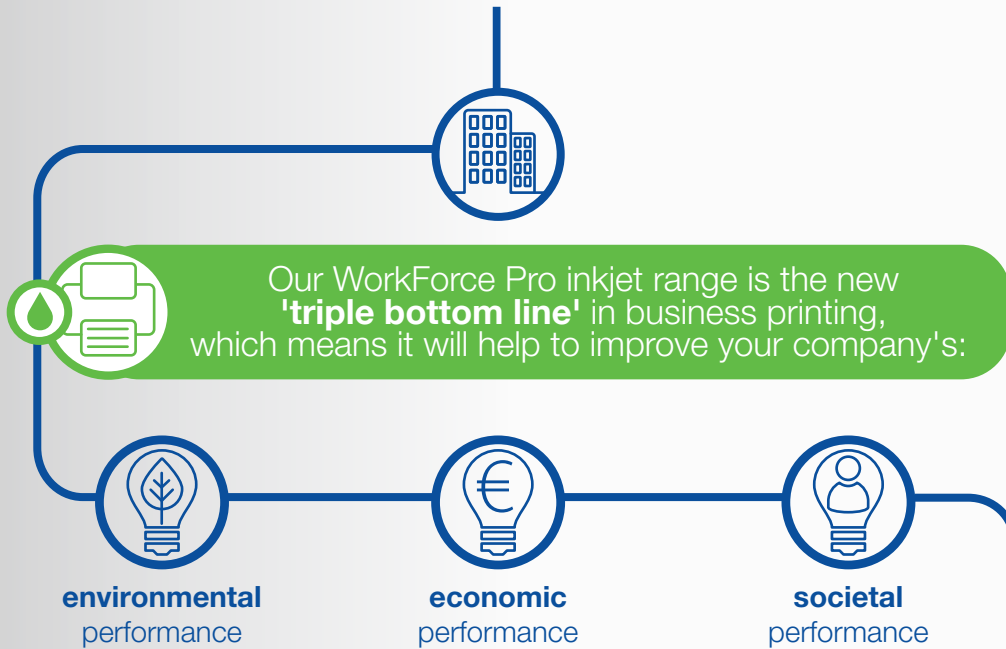


# MAKE THE SWITCH



**At Epson, we believe that technology should exist in harmony with ecology to help make a real difference.**

That's why we're encouraging businesses to make the switch from laser printers to our inkjet models.



This is especially important because there is currently mounting pressure on European businesses, from regulators and consumers, to become more sustainable.



More and more organisations are turning to Epson to sustain their environmental, economic and societal performance. Independent research that was commissioned by Epson, and carried out by BLI, helps to explain why.



If every business in Western Europe using colour laser printers switched to Epson Business inkjet printers, there would be an excess of **221,000 tonnes** annual reduction in waste

**94% less waste**  
WorkForce Pro printers produce up to 94% less waste than lasers and copiers.



Epson's clean technology provides a greener alternative to laser printers. With **no toner dust or ozone gas**, you can protect your environment and breathe easy.

**Zero ozone gases**  
WorkForce Pro printers emit zero ozone gases because they require no heat or electrical charge.



If every business in Western Europe switched to Epson Business inkjet printers, the reduction in CO<sub>2</sub> would be equivalent to the volume absorbed by at least **26.9 million trees.**

**92% less CO<sub>2</sub>**  
WorkForce Pro printers give out 92% less CO<sub>2</sub> than lasers and copiers.



If every business in Western Europe made the switch to Epson Business inkjet printers it would save enough power to run at least **507,000 households.**

**96% less energy**  
WorkForce Pro printers use up to 96% less energy than lasers and copiers.

Learn how your business, and the environment, can benefit if you make the switch to Epson Business inkjet printers.  
[epson.eu/maketheswitch](http://epson.eu/maketheswitch)

Technology in harmony with ecology



**EPSON**  
EXCEED YOUR VISION